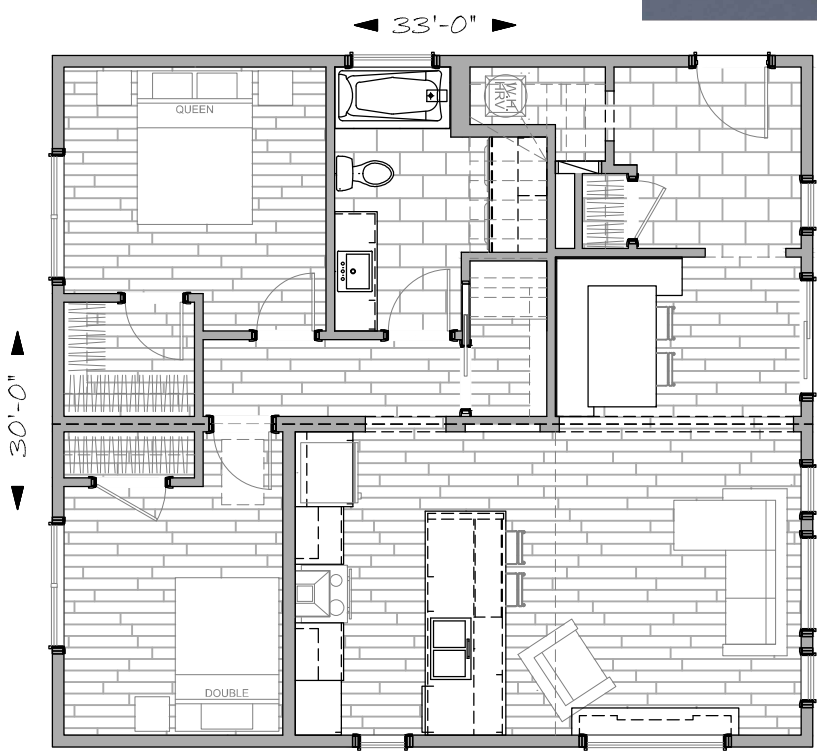




FRONT VIEW

**VIK - 2 BED - 1 BATH - #280219**  
 - 33' X 30' OVERALL, 990 S.F. LIVING AREA  
 - MINIMALIST CONCEPT  
 - BUILT-IN BENCH FOR DINING



CONVENTIONAL

1.800.561.8066

WWW.SUPREMEHOMES.CA