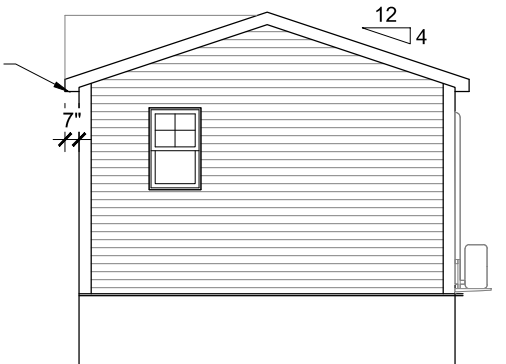


**FRONT ELEVATION**

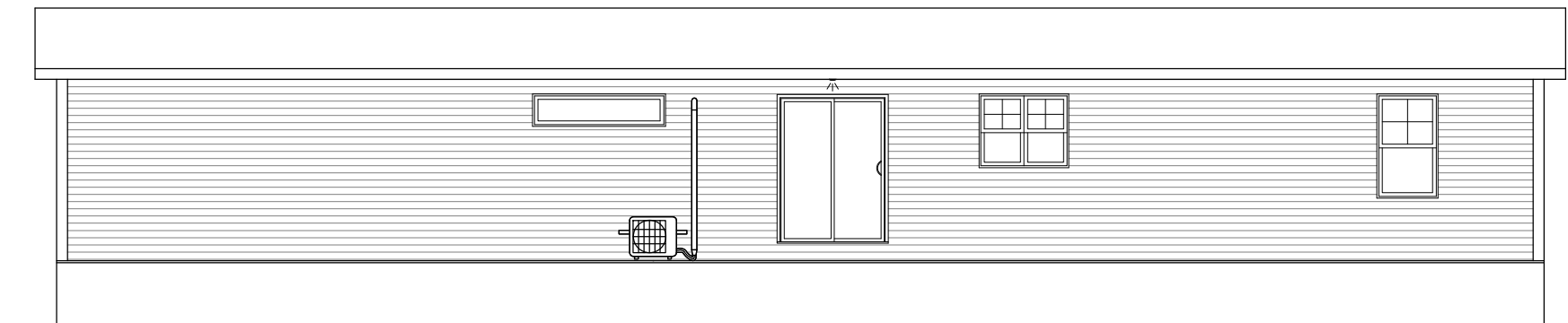


**RIGHT ELEVATION**

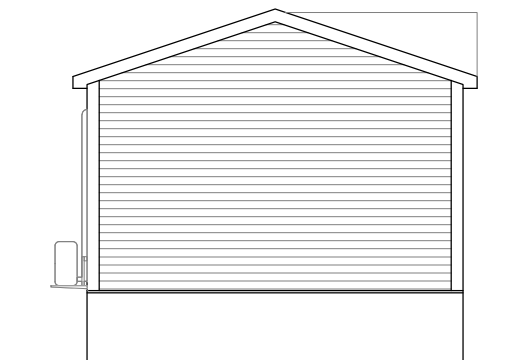
**WRAP ENTIRE UNIT  
WHITE PLASTIC**

**SIDING AREAS**

- VINYL SIDING 1195 S.F. + 15% = 1375 S.F.
- NOVIKSTONE 24 S.F. + 25% = 30 S.F.
- NOVIKSTONE (DORMERS) 4 S.F. + 35% = 6 S.F.
- NOVIKSHAKE 48 S.F. + 25% = 60 S.F.
- NOVIKSHAKE (DORMERS) 18 S.F. + 35% = 24 S.F.



**REAR ELEVATION**



**LEFT ELEVATION**

2019-06-25 - 10:17:19

REVISION SCHEDULE			
REV #	COMPLETION DATE	DRAWING STAGE	REVISION NOTES
1	2018-08-10	PRELIMINARY	- START PRELIMINARY PLAN
2	2018/08/20	PURCHASING	- STARTED PURCHASING DRAWINGS
3		CABINETS	-
4		PRODUCTION	-
5		PARTITIONS	-
6		-	-
7		-	-
8		-	-

I (WE) APPROVE THIS PLAN FOR CONSTRUCTION:

CLIENT: MSH #: 5723		CLIENT: SOUTH SHORE HOMES		RETAILER: J BABINEAU		SIGNATURE DATE: 2019/06/25		1/8" = 1'-0"	
PAGE #: 1	PURCHASING DRAWINGS: J BABINEAU	KITCHEN DRAWINGS: J BABINEAU	STOCK	PRELIMINARY DRAWINGS: J BABINEAU	SIZE: 1097 S.F.	DATE OF FIRST DRAWINGS: 2019/06/25	ELEVATIONS		
		PRODUCTION DRAWINGS: J BABINEAU		PARTITIONS DRAWING: -	SERIAL#: 210281	CSA#: 49739			